

Town & Country

Estate & Letting Agents

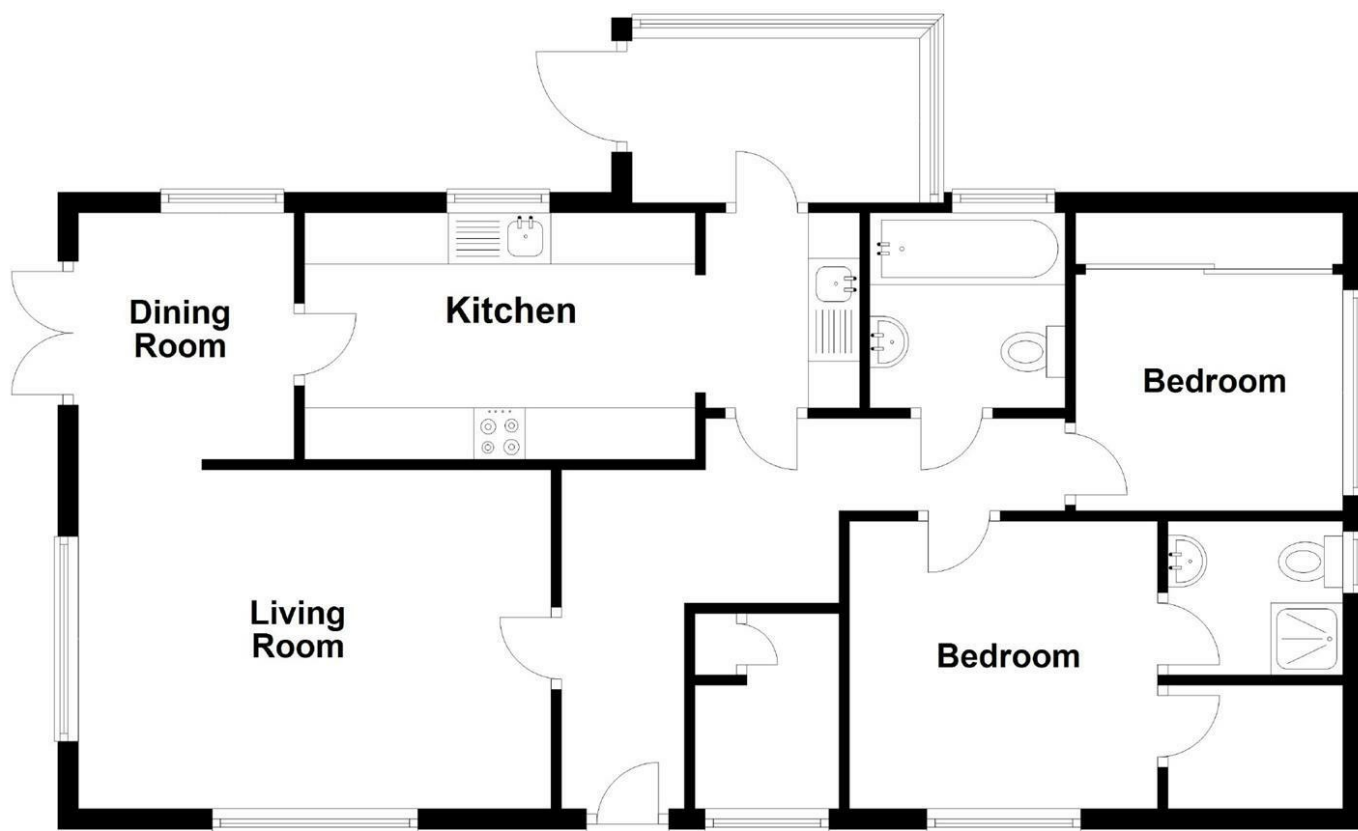


10 Brookside Park, Kinnerley, SY10 8EL

Town and Country Oswestry are delighted to offer this stunning detached park home located on a small purpose built complex with secure gated access and it's own fishing pool on the outskirts of the picturesque village of Kinnerley in the beautiful Shropshire Countryside. The property is heated with LPG Central Heating, benefits from double glazing, off road parking and good sized, corner plot, well-maintained gardens. This is a site for the over 50's.

- Stunning Park Home
- Two Bedrooms
- Utility and En Suite
- Corner Plot Gardens
- Off Road Parking
- Beautiful Interior
- Gated Complex
- Rural Location

£149,950



Ground Floor

Approx. 76.1 sq. metres (819.2 sq. feet)

Total area: approx. 76.1 sq. metres (819.2 sq. feet)

Energy Efficiency Rating		
	Current	Potential
Very energy efficient - lower running costs		
(92 plus) A		
(81-91) B		
(69-80) C		
(55-68) D		
(39-54) E		
(21-38) F		
(1-20) G	1	1
Not energy efficient - higher running costs		
England & Wales		
	EU Directive 2002/91/EC	